



SCHILL
connecting professionals

FT038 SPRING RETURN CABLE REEL

Large, robust wall, floor or ceiling mounting spring-retractable reel, IP44 rated. Suitable for commercial & industrial areas where longer cable lengths may be required.

The FT038 series is the largest of the spring retractable reels manufactured from sturdy thermoplastic, the reel is electrically insulated & corrosion resistant.

Depending on requirements, the desired length of cable is pulled out of the reel, leaving the remaining cable neatly stored on the reel safe from damage and dirt.

When the cable connection is no-longer required, a short pull on the ball-stop and the cable neatly rewinds.



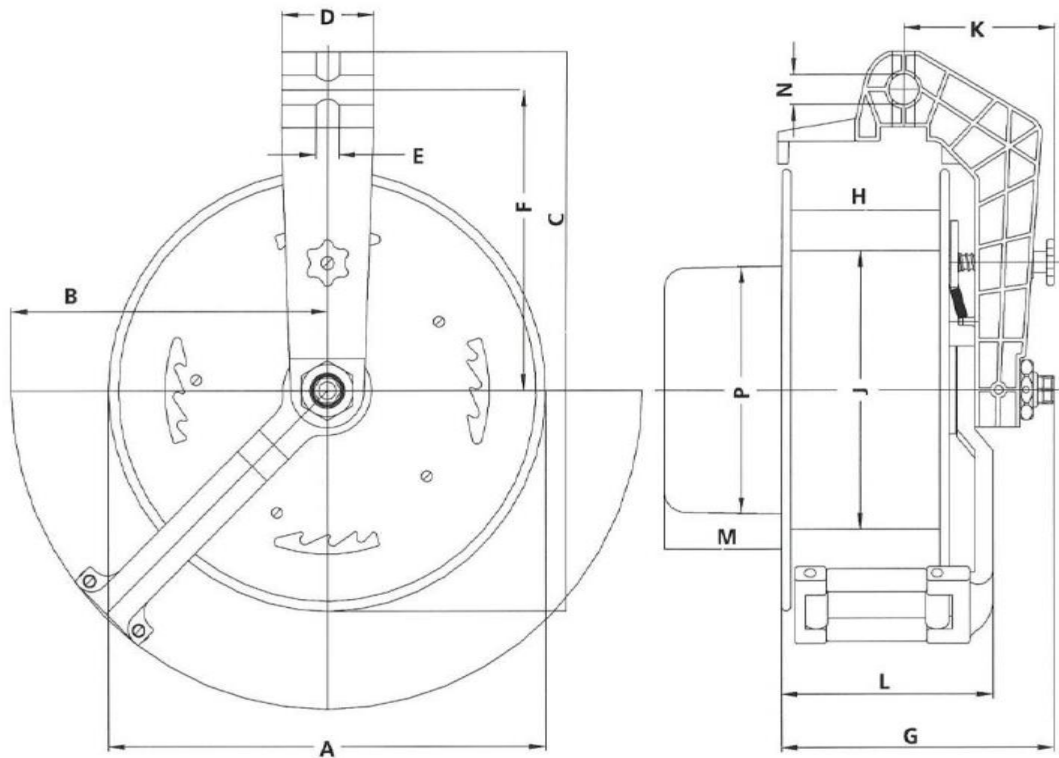
A spring-return cable reel means a safe & organized workplace.

Features:

- Load capacities up to 32A.
- Single & 3-phase 4 & 5-wire variants, including an earth-bonding version
- Multi-core variants up to x20 cores available
- Control voltage/Signal transfer collector option – up to x25 cores
- Uprated torque variant's for lifting non-standard loads up to 4Kg
- Cable lengths from 15m to 25m – 1.0mm² to 4mm², in HO7RN-F cables
- Wall, floor & ceiling brackets. (Wall bracket supplied as standard)
- Manual On/Off cable retraction ratchet
- Adjustable ball-stop
- High quality brass sliprings / sliver contacts
- Maintenance free ball-bearing axle
- IP44 protection
- Operating temp: 5°C to 60°C

Dimensions (mm):

| A | B | C | D | E | F | G | H | J | K | L | M | N | P |
|-----|-----|-----|----|----|-----|-----|-----|-----|-----|-----|-----|----|-----|
| 380 | 267 | 482 | 80 | 20 | 258 | 237 | 130 | 240 | 131 | 185 | 102 | 25 | 210 |



Part numbers & specifications:

| Part Number | Cable | Load Wound | Load Unwound | Weight Kg |
|---------------|---------------------------|-----------------|--------------|-----------|
| FT038.0320 | 20m 3x1.5mm ² | 8A | 16A | 13.0 |
| FT038.0515 | 15m 5x1.5mm ² | 6A | 16A | 14.0 |
| FT038.0715 | 15m 7x1.5mm ² | 6A | 16A | 16.0 |
| FT038.0325 | 25m 3x1.0mm ² | 4A | 10A | 12.0 |
| FT038.0315.32 | 15m 3x4.0mm ² | 16A | 32A | 14.0 |
| FT038.0515.25 | 15m 5x2.5mm ² | 9A | 25A | 16.0 |
| FT038.0415 | 15m 4x1.5mm ² | 6A | 16A | 13.0 |
| FT038.0515.32 | 15m 5x4.0mm ² | 14A | 32A | 17.0 |
| FT038.1010.16 | 10m 10x1.5mm ² | 6A | 16A | 16.0 |
| FT038.2015 | 15m 20x1.0mm ² | 4A | 10A | 41.0 |
| FTE038.0120 | 20m 1x10mm ² | Earth-Bond Reel | - | 11.0 |